

2011 Burn Injury Model Systems National Database Update: Pediatrics

Generated by the Burn Injury Model Systems National Data and Statistical Center

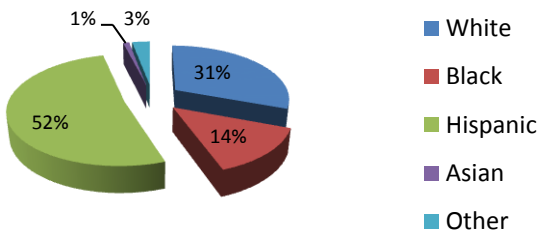
Website: <http://bms-dcc.ucdenver.edu>

The Burn Injury Models Systems National Database is a prospective longitudinal multi-center study examining adults and pediatrics with burn injury at 6 months, 12 months, 24 months, and 5 and 10 years after injury. As of Dec. 2011, the database included information on 1,862 pediatrics (≤ 18) with burn injury. This document summarizes highlights of the information about pediatrics enrolled in this long term multi-site study.

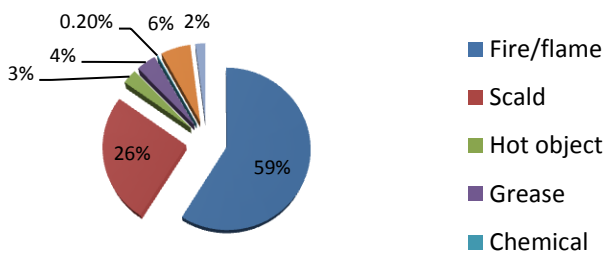
Gender: 75% Male, 25% Female

Age at Injury: Average = 7 years of age

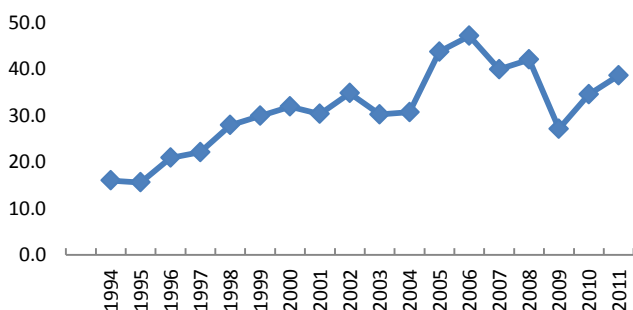
Race/ethnicity (n = 1852)



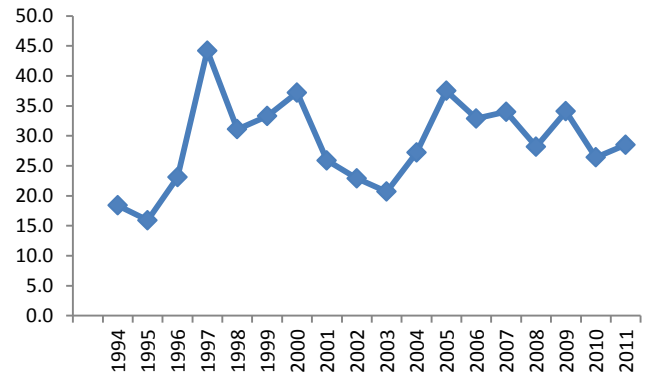
Cause of injury (n = 1841)



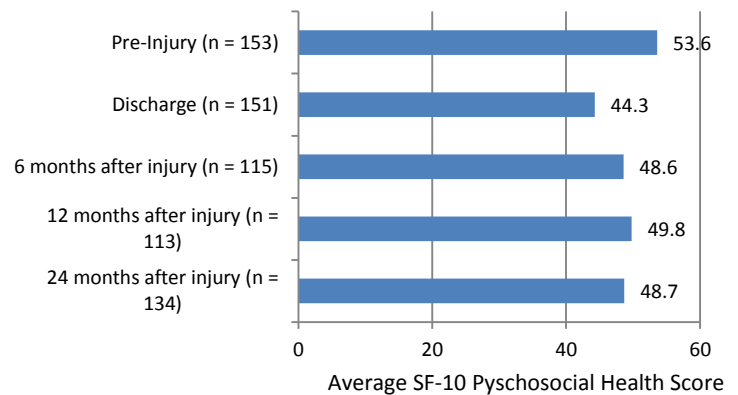
Total percentage of body surface area burned



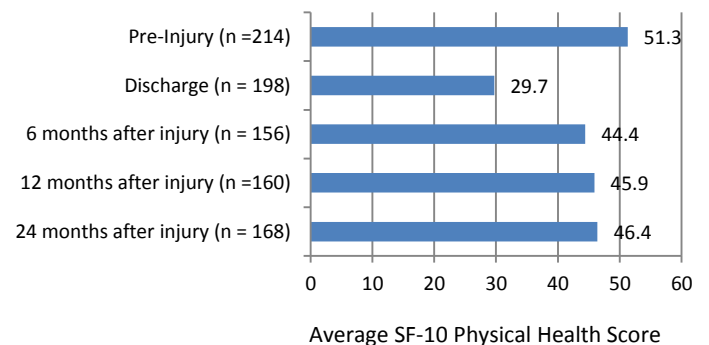
Average length of hospital stay in days



SF-10 Psychosocial Health Score



SF-10 Physical Health Score



There are four BMS Centers: University of Washington, University of Texas Medical Branch, Johns Hopkins, and University of Texas Southwest. The clinical centers and the National Data and Statistical Center (located at the University of Colorado Denver) are funded by the National Institute on Disability and Rehabilitation Research, Office of Special Education and Rehabilitative Services, U.S. Department of Education.